

This Manual Must Be Read Before Operating The Equipment

Owner / Operator's Manual



The Commercial Turf Choice

ACCESSORY

TLP-060



Warren, Michigan 48089
866-5TURFEX

CUSTOMER COPY

Protected by the following patents, #6,089,478, #6,088,865, #Des.425,915
and other pending U.S. and foreign patent applications.

Introduction	3
General Information and Registration	4
Safety Information	5
TLP-060 Main Assembly Views	6
TLP-060 Assembly	7-8
Assembly Instructions	9
Warranty & Warranty Registration	10-11

Have a question or need assistance?
TurfEx Customer Service
(866) 5TURFEX

or (586) 756-6555

Monday through Friday 8:00 AM to 4:30 PM EST

Fax: (586) 427-0552

E-Mail: customercare@trynexfactory.com

Website: www.turfexproducts.com

This manual has been designed for your help. It will assist you and instruct you on the proper set-up, installation and use of this spreader.

Refer to the table of contents for an outline of this manual.

We require that you read and understand the contents of this manual completely (especially all safety information) before attempting any procedure contained herein.



THIS SIGN SHOULD ALERT YOU:

The Society of Automotive Engineers has adopted this SAFETY ALERT SYMBOL to pinpoint characteristics that, if NOT carefully followed, can create a safety hazard. When you see this symbol in this manual or on the machine itself, BE ALERT! Your personal safety and the safety of others is involved.

Defined below are the SAFETY ALERT messages and how they will appear in this manual:



DANGER

(RED)

Information that, if not carefully followed, can cause death!



WARNING

(ORANGE)

Information that, if not carefully followed, can cause serious personal injury or death!



CAUTION

(YELLOW)

Information that, if not carefully followed, can cause minor injury or damage to equipment.

CONGRATULATIONS!

The Turfex product you have purchased is an example of turf management product at its finest! Your Turfex product's, self contained design is a trademark of all Turfex products. Here's why...

QUALITY: Parts manufactured with higher quality materials, means minimal maintenance for your Turfex product.

WARRANTY: Two years parts and labor from date of installation.

The benefits you are about to recognize are that of time, money and effort.
We welcome you to the world of Turfex Performance.

Registration

Record the following information in this manual for quick reference.

Spreader Model Number _____

Serial Number _____ Controller Serial Number _____

Date of Purchase _____

Dealer Where Purchased _____

When ordering parts, the above information is necessary. This will help to insure that you receive the correct parts.

At the right is a diagram of the ID tag. This tag is located on the frame (where applicable).



SER. NO. _____
TRYNEX INTERNATIONAL
Warren, MI 48089 (800) 725-8377

Please fill out the warranty card with all the necessary information to validate it. This will also give us a record so that any safety or service information can be communicated to you.



Before attempting any procedure in this book, these safety instructions must be read and understood by all workers who have any part in the preparation or use of this equipment.

For your safety warning and information decals have been placed on this product to remind the operator of safety precautions. If anything happens to mark or destroy the decals, please request new ones from Tynex.



Accessories must be locked into position before operating vehicle.



Leaf pusher is not to be used for snow or other heavy debris moving. This accessory was designed for leaf and light yard debris cleanup. Any other use could void warranty or cause injury to operator.



Never exceed the Gross Vehicle Weight Rating of vehicle. Failure to do so may limit a vehicles handling characteristics.



Do not drive at excessive speeds when accessories are attached to vehicle. Braking distances may be decreased and handling characteristics may be impaired at higher speeds.



Never allow children to operate or climb on equipment.
Always check areas to be sure no hazardous conditions or substances are in the area.
Always inspect unit for defects: broken, worn or bent parts, weakened areas on mount.



Always shut off vehicle and power source before attempting to attach or detach or service spreader unit. Be sure vehicle/power source is properly braked or chocked.



Always keep hands, feet, and clothing away from power-driven parts. Remember it is the owner's responsibility to communicate information on safe usage and proper maintenance of all equipment.



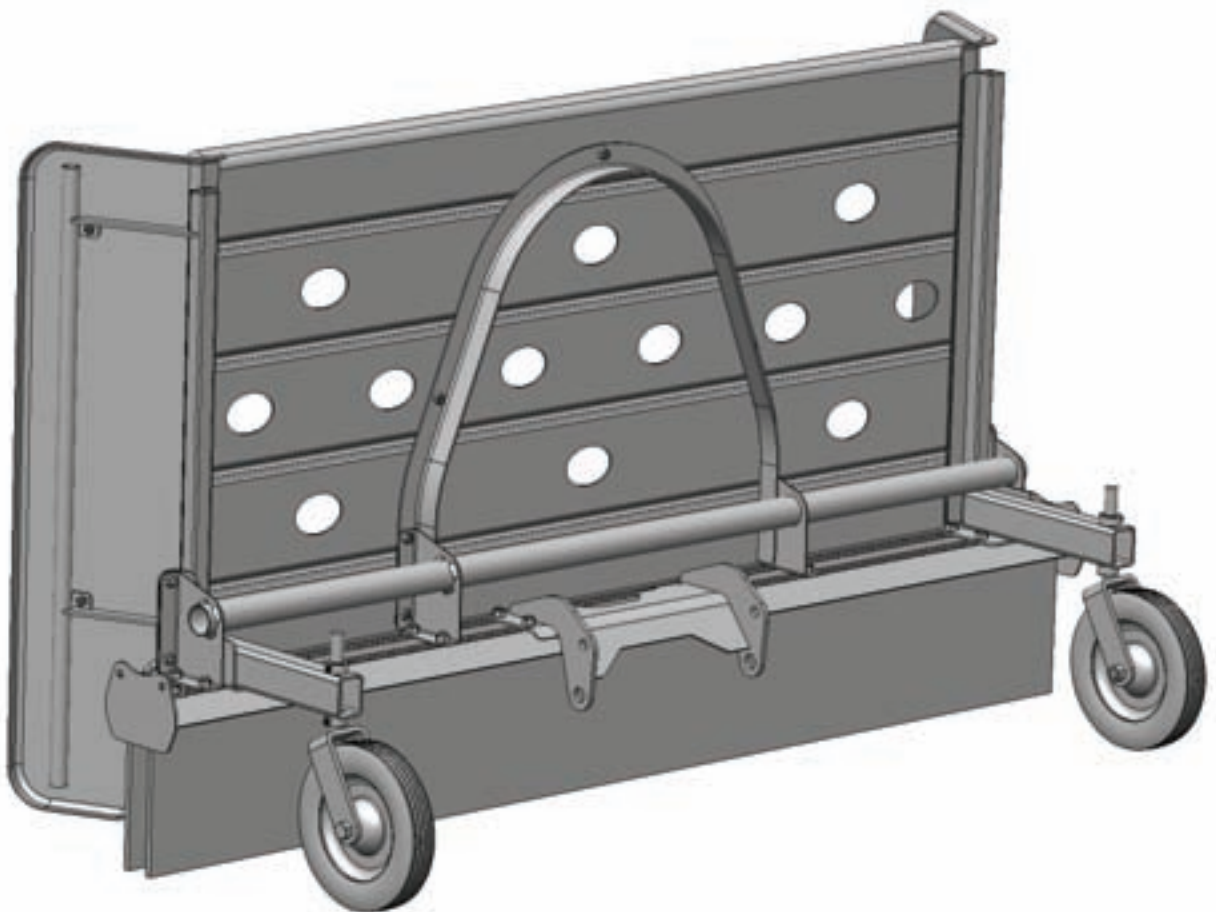
Inspect the unit periodically for defects. Parts that are broken, missing, or worn out must be replaced immediately. The unit, or any part of it should not be altered without prior written permission from the manufacturer.



Only Turfex approved accessories can be mounted/installed on ZTR-300 mounting system, failure to do so will void manufacturers warranty. When using Turfex approved accessories, do not exceed load limit of 240 pounds.

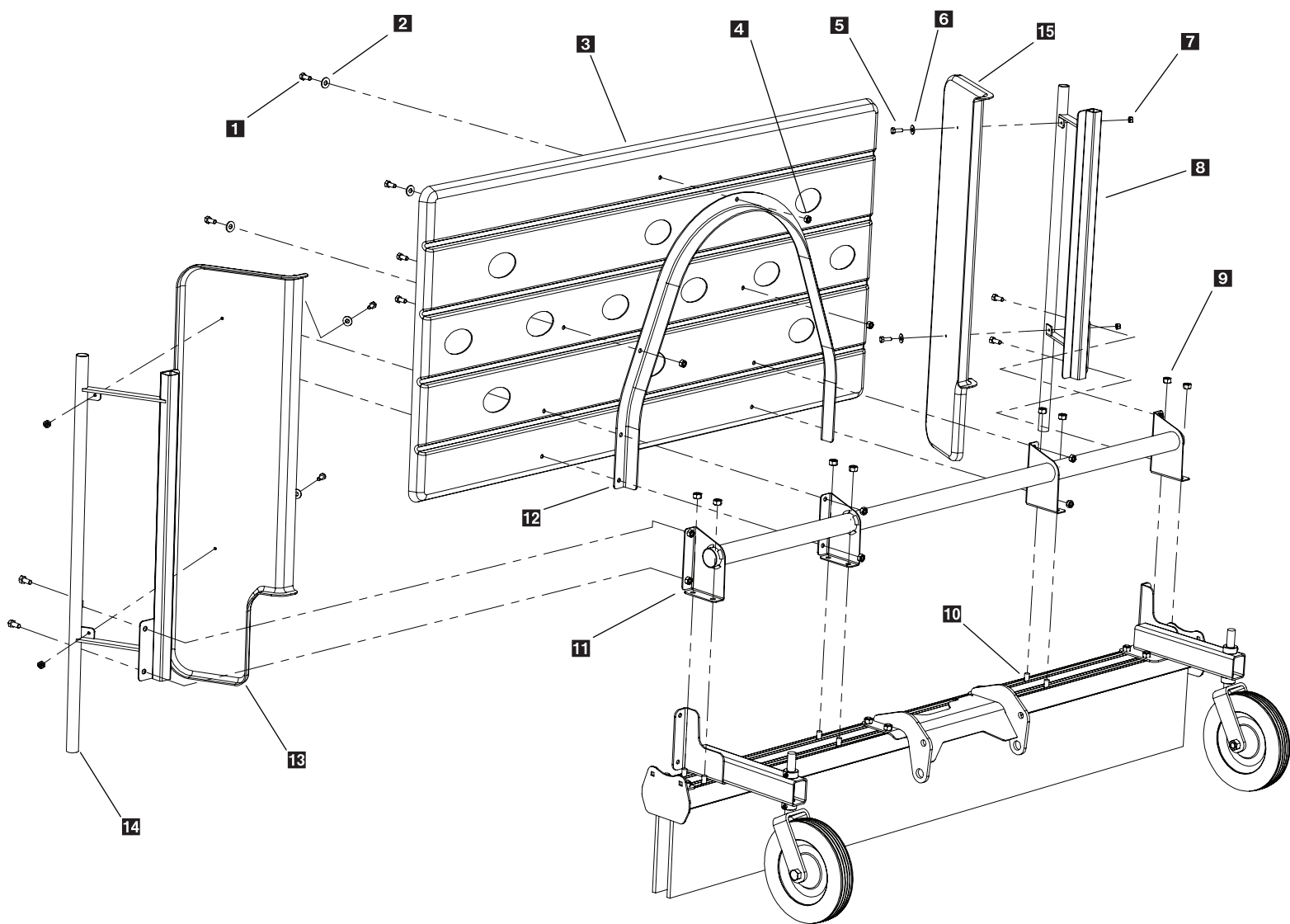
Assembly Views

Model # TLP-060



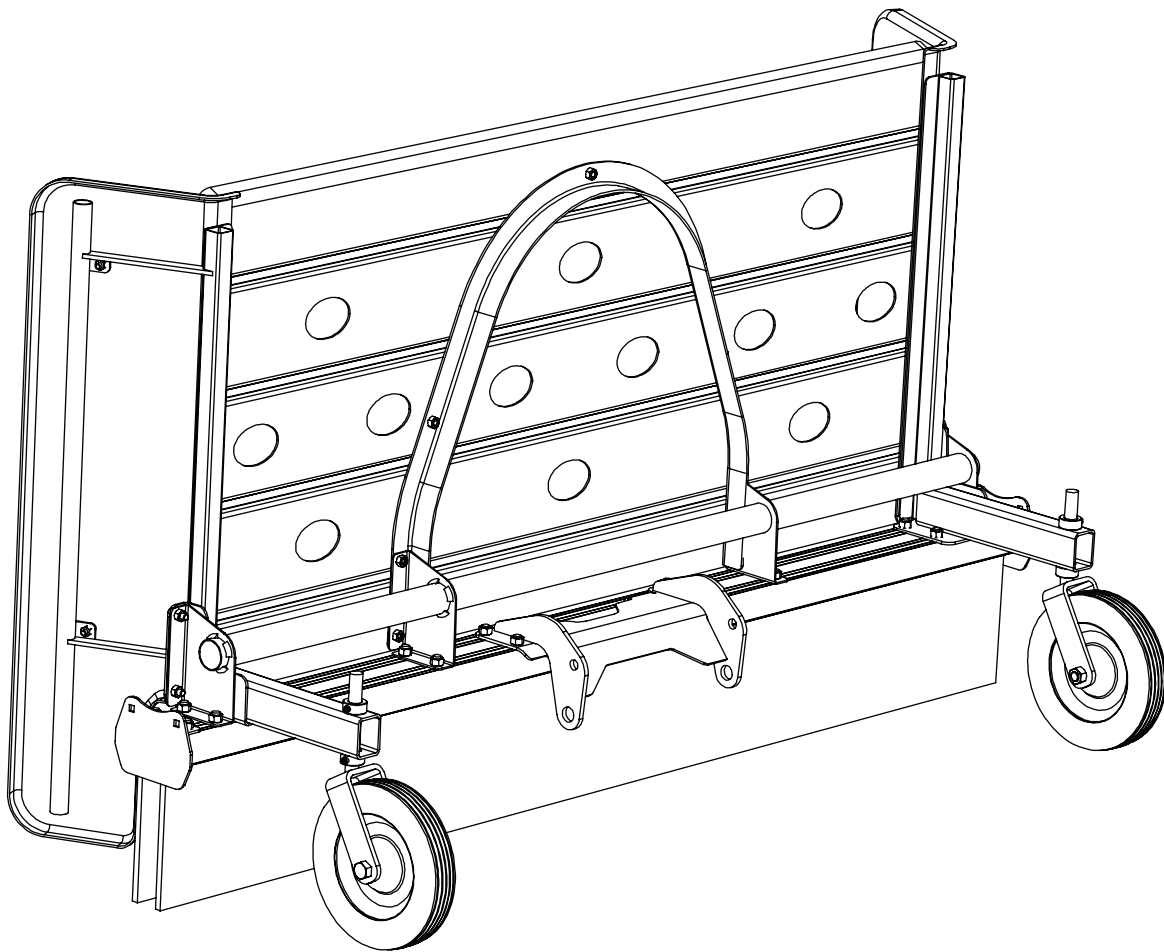
Parts Breakdown

Model # TLP-060



Parts Breakdown

Model # TLP-060



Key	Part No.	Description	Qty.
1	D 5209	5/16-18 x 3/4 SS Hex Nut	7
2	D 5949	5/16 Flat Washer SS	7
3	T 40141	Main Panel	1
4	D 5023	5/16-18 Nylox Nut	7
5	D 6132	1/4-20 x 3/4 SS Hex Bolt	4
6	T 15014	1/4 Flat Washer SS	4
7	T 15016	1/4-20 Nylox Nut	4
8	T 40133	Right Wing Mounting Arm	1
9	D 6584	3/8-16 Serrated Hex Nut	8
10	D 6810	3/8-16 x 1 Carriage Bolt	8
11	T 40130	Mounting Tube	1
12	T 40131	Main Panel Support	1
13	T 40142	Left Wing Panel	1
14	T 40132	Left Wing Mounting Arm	1
15	T 40143	Right Wing Panel	1

Mounting Instructions



Model # TLP-060

Step 1: Install cross support tube as shown on page 7 exploded view. You will need to remove both end caps and remove each wheel assembly in order to slide carriage bolts into proper mounting position.

Step 2: Install both left and right wing assemblies to broom head as shown on page 7.

Step 3: Once you have tightened down the side panels, you can now mount the main panel assembly as shown on page 7.

Step 4: Check and tighten all hardware.

CAUTION: DO NOT PUSH DENSE MATERIALS SUCH AS SNOW, DIRT, GRAVEL ETC.

Limited Warranty

Two year warranty on Turfex brand products against defects in material or workmanship under normal use and service, subject to limitations detailed below. Warranty period of two years begins on the date of purchase by the original retail user.

The WARRANTY REGISTRATION CARD must be returned to the manufacturer for this warranty to become effective. This warranty applies to the original retail purchaser only. This warranty does not cover damages caused by improper installation, misuse, lack of proper maintenance, alterations or repairs made by anyone other than authorized Trynex dealers or Trynex personnel. Due to the corrosive properties of the materials dispensed by spreaders, Trynex does not warrant against damage caused by corrosion. Warranty claims by the user must be made to the dealer from where the product was purchased, unless otherwise authorized by Trynex. Trynex reserves the right to determine if any part is defective and to repair or replace such parts as it elects. This warranty does not cover shipping costs of defective parts to or from the dealer.

LIMITATION OF LIABILITY

Neither Trynex, nor any company affiliated with it, makes any warranties, representations or promise as to the performance or quality other than what is herein contained. The liability of Trynex to the purchaser for damages arising out of the manufacture, sale, delivery, use or resale of this spreader shall be limited to and shall not exceed the costs of repair or replacement of defective parts. Trynex shall not be liable for loss of use, inconvenience or any other incidental, indirect or consequential damages, so the above limitations on incidental or consequential damages may not apply to you.

NO DEALER HAS AUTHORITY TO MAKE ANY REPRESENTATION OR PROMISE ON BEHALF OF TRYNEX INTERNATIONAL, OR TO ALTER OR MODIFY THE TERMS OR LIMITATIONS OF THIS WARRANTY IN ANY WAY.

Warranty Registration and Customer Survey



To initiate the warranty on your new TurfEx product and assure prompt warranty service, please complete the following warranty registration and customer survey, sign and mail it back to factory within 30 days of purchase.

- 1) Date of Purchase: _____
- 2) Name: _____
Address: _____

Phone: _____
- 3) TurfEx Model Purchased: _____ Serial Number: _____
- 4) Is this your first Turfex Product? ☐ Yes ☐ No
- 5) What type of vehicle are you using with your Spreader, Broom and/or Sprayer?
Make _____ Model _____ Year _____
- 6) What type of material are you using in your spreader and/or sprayer? _____
- 7) TurfEx Dealer Name: _____
TurfEx Dealer Address: _____

Turfex Dealer Phone: _____
- 8) Does your TurfEx Dealer stock TurfEx replacement Parts? ☐ Yes ☐ No ☐ I don't know
- 9) Do you feel your TurfEx Dealer sold you the correct product for your needs/application? ☐ Yes ☐ No
- 10) How would you rate your overall satisfaction with your Turfex Dealer? -

<input type="checkbox"/>	<input type="checkbox"/>	<input type="checkbox"/>	<input type="checkbox"/>	<input type="checkbox"/>	<input type="checkbox"/>	<input type="checkbox"/>
Very Satisfied	Satisfied	Somewhat Satisfied	Somewhat Dissatisfied	Dissatisfied		Very Dissatisfied
- 11) How would you rate your overall satisfaction with your Turfex Product?

<input type="checkbox"/>	<input type="checkbox"/>	<input type="checkbox"/>	<input type="checkbox"/>	<input type="checkbox"/>	<input type="checkbox"/>	<input type="checkbox"/>
Very Satisfied	Satisfied	Somewhat Satisfied	Somewhat Dissatisfied	Dissatisfied		Very Dissatisfied
- 12) Would you purchase another TurfEx Product? ☐ Yes ☐ No
- 13) If you would like to receive E-Mail ALERTS for new products, bulletins or special promotions please supply address: _____
- 14) Please use the space below to convey your comments and/or suggestions.

- NOTE: I have read the owner's manual and all safety precautions and I understand that this equipment could be dangerous if not operated with care and under the proper conditions.
- 15) Owner's signature: **X** _____

PLEASE FOLD AND SEAL WITH TRANSPARENT TAPE BEFORE MAILING.

Simply Fill Out Your
Warranty Registration and
Return It to the Factory!

From:



Postage
Required
Post Office will
not deliver
without proper
postage.

TRYNEX[®]
INTERNATIONAL
23455 REGENCY PARK DR.
WARREN MI 48089-2667

