

TS300-1 | TS300EG-1



TurfEx® tailgate mounted equipment can fit on a variety of lawn and landscape equipment including tractors and utility vehicles. It is an excellent choice for spreading materials such as fertilizer, herbicides, pesticides or even seed. It comes with either a manual gate (TS300-1) or an electric gate (TS300EG-1).

Features:

- Anti-corrosive poly hoppers with fitted covers
- 3.0 cu ft capacity
- Multiple mounting options available
- Full 2 year warranty
- Standard 2-inch (LDM-175) receiver mount included

Applications:

- Great for use in areas such as:
 - Colleges & universities
 - Hospitals & healthcare facilities
 - Parks & recreation areas
 - Athletic fields, stadiums & golf courses



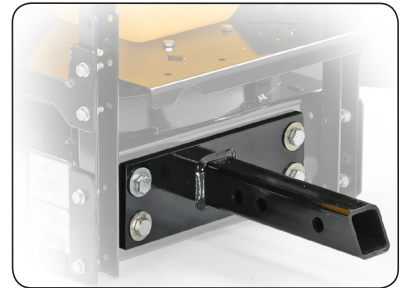
	TS300-1	TS300EG-1
EMPTY WEIGHT:	65 lbs. (29.5 kg)	75 lbs. (34 kg)
OVERALL LENGTH:	22" (55.9 cm)	22" (55.9 cm)
OVERALL WIDTH:	30" (76.2 cm)	30" (76.2 cm)
OVERALL HEIGHT:	30" (76.2 cm)	30" (76.2 cm)
CAPACITY:	3 cu ft (0.1 cu m)	3 cu ft (0.1 cu m)
SPREADING WIDTH:	Up to 20 ft (6.1 m)	Up to 20 ft (6.1 m)
HOPPER:	Anti-corrosive polyethylene	Anti-corrosive polyethylene

UTILITY SPREADERS

TS300-1 | TS300EG-1



TS300-1 / TS300EG-1 (pictured)
Tailgate Spreader



Standard 2" (LDM-175) receiver mount included



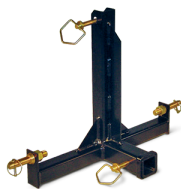
VAR-020
VARIABLE SPEED CONTROL
Standard on TS300EG-1, Optional on TS300-1



UTM-175-1
UTILITY BED MOUNT



DRM-175-1
DROP UTILITY MOUNT



TPM-175-1
3-POINT MOUNT



TLR-175
TRAILER MOUNT